

Advantage™ TPR / Round Tread Wheels

Capacity up to 300 lbs. each



5-213GD
(shown in photo)

Wheel Diameter (Inches)	Tread Width (Inches)	Bearing	Capacity (Pounds)	Model Number	Bearing Bore (Inches)	Hub Length (Inches)	Approximate Weight (Pounds)
3 1/2	1 1/4	BALL	225	3-1/2-213GD	3/8	1-5/8	1/2
		DELRIN	225	3-1/2-314GD	1/2	1-1/2	1/2
4	1 1/4	BALL	250	4-213GD	3/8	1-5/8	5/8
		DELRIN	250	4-314GD	1/2	1-1/2	5/8
5	1 1/4	BALL	250	5-213GD	3/8	1-5/8	3/4
		DELRIN	250	5-314GD	1/2	1-1/2	3/4
6	1 1/4	BALL	300	6-213GD	3/8	1-5/8	1
		DELRIN	300	6-314GD	1/2	1-1/2	1

FEATURES

Advantage wheels feature a grey, special modulus TPR (Thermoplastic Rubber) round tread permanently bonded to a rugged polyolefin wheel core. These attractive crowned tread wheels offer superior rolling and maneuvering ease with high performance levels that exceed other tread materials. Thanks to their cushion ride, they are ideally suited for a wide variety of foodservice, healthcare and institutional applications. All Advantage wheels are non-marking which reduces unsightly marking and scuffing of floors. They are a good choice for use in wet or damp environments.

- ✓ **Standard Color / Finish:** Dark grey tread on light grey wheel core
- ✓ **Tread Hardness:** 65 (± 5) Shore A Scale
- ✓ **Temperature Range:** -40° F to + 180° F

CONDUCTIVE OPTION

Above wheel models optionally available with conductive non-marking grey tread. Consult factory.

Advantage™ TPR / Flat Tread Wheels

Capacity up to 325 lbs. each



5-213GF
(shown in photo)

Wheel Diameter (Inches)	Tread Width (Inches)	Bearing	Capacity (Pounds)	Model Number	Bearing Bore (Inches)	Hub Length (Inches)	Approximate Weight (Pounds)
3 1/2	1 1/4	BALL	225	3-1/2-213GF	3/8	1-5/8	1/2
		DELRIN	225	3-1/2-314GF	1/2	1-1/2	1/2
4	1 1/4	BALL	300	4-213GF	3/8	1-5/8	5/8
		DELRIN	300	4-314GF	1/2	1-1/2	5/8
5	1 1/4	BALL	325	5-213GF	3/8	1-5/8	3/4
		DELRIN	325	5-314GF	1/2	1-1/2	3/4

FEATURES

Flat tread Advantage wheels offer the same outstanding performance characteristics with the added bonus of greater load capacity. They carry heavier loads while maintaining their non-marking and easy rolling abilities. A flat, grey special modulus TPR (Thermoplastic Rubber) tread is permanently bonded to a solid polyolefin wheel core. This unique tread is formulated to resist "chunking" and rejects floor debris. Advantage flat tread models are well suited for institutional uses as well as warehouse, industrial and wet environments.

- ✓ **Standard Color / Finish:** Dark grey tread on light grey wheel core
- ✓ **Tread Hardness:** 65 (± 5) Shore A Scale
- ✓ **Temperature Range:** -40° F to + 180° F

CONDUCTIVE OPTION

Above wheel models optionally available with conductive non-marking grey tread. Consult factory.

Advantage™ Heat Wheels

Capacity up to 325 lbs. each



- ✓ Unique soft tread wheel handles the heat for autoclave applications
- ✓ Wheels roll quiet and offer a smoother ride compared to traditional high temperature wheels
- ✓ Recommended for use in hospitals, laboratories and cleanrooms
- ✓ Corrosion resistant thermoplastics make wheel perfect for washdown and steam clean applications
- ✓ Resilient tread material rejects floor debris compared to many dirt magnet wheels on the market

Wheel Diameter (Inches)	Tread Width (Inches)	Bearing	Capacity (Pounds)	Wheel Model Number	Bearing Bore (Inches)	Bore Less Bearing (Inches)	Hub Length (Inches)
-------------------------	----------------------	---------	-------------------	--------------------	-----------------------	----------------------------	---------------------

Advantage Heat Flat

3 1/2	1 1/4	STAINLESS BALL	225*	3-1/2-213RTF	3/8	1-1/8	1-5/8
4	1 1/4	STAINLESS BALL	300*	4-213RTF	3/8	1-1/8	1-5/8
5	1 1/4	STAINLESS BALL	300*	5-213RTF	3/8	1-1/8	1-5/8
6	1 1/4	STAINLESS BALL	325*	6-213RTF	3/8	1-1/8	1-5/8

Advantage Heat Round

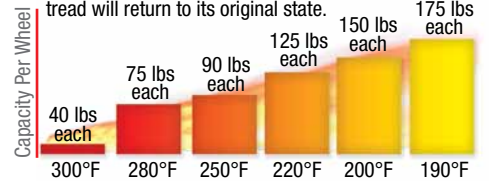
3 1/2	1 1/4	STAINLESS BALL	225*	3-1/2-213RTR	3/8	1-1/8	1-5/8
4	1 1/4	STAINLESS BALL	300*	4-213RTR	3/8	1-1/8	1-5/8
5	1 1/4	STAINLESS BALL	300*	5-213RTR	3/8	1-1/8	1-5/8
6	1 1/4	STAINLESS BALL	325*	6-213RTR	3/8	1-1/8	1-5/8

Choice of ball, stainless ball, precision ball and delrin bearings available

- ✓ **Tread Hardness:** 65 (± 5) Shore A Scale
- ✓ **Temperature Range:** see Tread Elasticity vs Temperature chart at right

Tread Elasticity Vs. Temperature

*Maximum load under heat in which the tread will return to its original state.



2" tread width Advantage Heat Coming Soon

Advantage™ Health Wheels

Capacity up to 675 lbs. each



- ✓ New antimicrobial wheel is designed to suppress the growth of microbes including bacteria, mold and fungi
- ✓ Recommended for use in hospitals, laboratories, food service industry and cleanrooms
- ✓ Additive in wheel is approved for use in the medical and food service industry, with the additive being certified by the FDA, EPA and NSF
- ✓ Choice of ball, stainless ball, precision ball and delrin bearings available
- ✓ **Tread Hardness:** 65 (± 5) Shore A Scale
- ✓ **Temperature Range:** -40°F to 180°F

Wheel Diameter (Inches)	Tread Width (Inches)	Bearing	Capacity (Pounds)	Wheel Model Number	Bearing Bore (Inches)	Bore Less Bearing (Inches)	Hub Length (Inches)
-------------------------	----------------------	---------	-------------------	--------------------	-----------------------	----------------------------	---------------------

Advantage Health

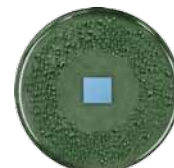
3 1/2	1 1/4	STAINLESS BALL	225	3-1/2-213MF	3/8	1-1/8	1-5/8
4	1 1/4	STAINLESS BALL	300	4-213MF	3/8	1-1/8	1-5/8
5	1 1/4	STAINLESS BALL	300	5-213MF	3/8	1-1/8	1-5/8
6	1 1/4	STAINLESS BALL	325	6-213MF	3/8	1-1/8	1-5/8

Advantage HD Health

4	2	ROLLER	350	4-220MF	3/4	2-3/8	1-3/16
5	2	ROLLER	375	5-220MF	3/4	2-3/8	1-3/16
6	2	ROLLER	600	6-220MF	3/4	2-3/8	1-3/16
8	2	ROLLER	675	8-220MF	3/4	2-3/8	1-3/16



Round tread models available. Change MF to MD



Petri dish show the difference in bacterial growth over a seven day incubation period. The additive lasts the life of the wheel for continuous suppression of microbe growth.

Moldon Rubber Aluminum Core Wheels

Capacity up to 500 lbs. each



6-620
(shown in photo)

FEATURES

Moldon Rubber wheels feature a cushion rubber tread permanently vulcanized to a die-cast aluminum wheel core. These wheels are a good choice when a light weight wheel is needed with good load capacity and shock absorbing capability. They offer maximum floor protection and quiet operation on a variety of floor surfaces.

- ✓ **Standard Color / Finish:** Black tread on die-cast aluminum wheel core
- ✓ **Tread Hardness:** 75 (± 5) Shore A Scale
- ✓ **Temperature Range:** -40° F to + 160° F

Wheel Diameter (Inches)	Tread Width (Inches)	Bearing	Capacity (Pounds)	Model Number	Bearing Bore (Inches)	Bore Less Bearing (Inches)	Hub Length (Inches)	Approximate Weight (Pounds)
4	1 1/2	BALL	200	4-615B	1/2, 5/8, 3/4	1-3/8	1-3/4	1-3/8
	2	ROLLER	300	4-620	3/4	1-3/16	2-3/8	1-1/2
5	1 1/2	BALL	250	5-615B	1/2, 5/8, 3/4	1-3/8	1-3/4	1-3/4
	2	BALL	350	5-620B	1/2, 5/8, 3/4	1-3/8	2-1/4	2
		ROLLER	350	5-620	3/4	1-5/8	2-3/8	2
6	1 1/2	BALL	300	6-615B	1/2, 5/8, 3/4	1-3/8	1-3/4	2-1/2
	2	BALL	410	6-620B	1/2, 5/8, 3/4	1-3/8	2-1/4	2-1/2
		ROLLER	410	6-620	3/4	1-5/8	2-3/8	2-1/2
8	1 5/8	BALL	450	8-615B2	1/2, 5/8, 3/4	1-3/8	2	3
		BALL	450	8-615B	1/2, 5/8, 3/4	1-3/8	2-1/4	3
		BALL	450	8-615B0	1/2, 5/8, 3/4	1-3/8	1-3/4 OFFSET	3
	2	BALL	500	8-620B	1/2, 5/8, 3/4	1-3/8	2-1/4	3-1/2
		ROLLER	500	8-620	3/4	1-3/16	2-3/8	3-1/2
10	1 5/8	BALL	500	10-615B0	1/2, 5/8, 3/4	1-3/8	1-5/8 OFFSET	7

Moldon Rubber Cast Iron Core Wheels

Capacity up to 500 lbs. each



6-620CI
(shown in photo)

FEATURES

For heavy duty industrial applications, Moldon Rubber wheels are an all-purpose industry standard. They are recommended for heavy loads where high strength and maximum shock absorption are important. These models are an economical choice for tough, abusive conditions. Special bore and

keyway sizes are available. Please consult factory.

- ✓ **Standard Color / Finish:** Black rubber on black spoke wheel core
- ✓ **Tread Hardness:** 75 (± 5) Shore A Scale
- ✓ **Temperature Range:** -40° F to + 160° F

Wheel Diameter (Inches)	Tread Width (Inches)	Bearing	Capacity (Pounds)	Model Number	Bearing Bore (Inches)	Bore Less Bearing (Inches)	Hub Length (Inches)	Approximate Weight (Pounds)
4	2	ROLLER	400	4-620CI	3/4	1-3/16	2-3/8	4-1/2
5	2	ROLLER	400	5-620CI	3/4	1-3/16	2-3/8	5
6	2	ROLLER	450	6-620CI	3/4	1-3/16	2-3/8	2-1/2
8	2	ROLLER	500	8-620CI	3/4	1-3/16	2-3/8	8-1/2

Hi-Temp Resin Wheels

Capacity up to 600 lbs. each



5-521 NHT
(shown in photo)

Wheel Diameter (Inches)	Tread Width (Inches)	Bearing	Capacity (Pounds)	Model Number	Bearing Bore (Inches)	Hub Length (Inches)	Approximate Weight (Pounds)
3 1/2	1 1/4	PLAIN	600	3-1/2-521 HTN	1/2	1-3/4	1/2
4	1 1/2	PLAIN	375	4-521 HT	1/2	1-5/8	3/4
5	1 1/2	PLAIN	450	5-521 NHT	1/2	1-5/8	1

FEATURES

Exclusive blended resin compound is designed to withstand the extreme high-temperatures required by certain industries and applications. These easy rolling wheels will not absorb moisture and offer high load ratings and long service life. In addition, they are resistant to most solvents, salts,

alkalines, cooking oils, cleaning chemicals, steam cleaning and water immersion.

They are ideally suited for high temperature applications such as bakeries, food processing plants and industrial parts heating operations.

- ✓ **Standard Color / Finish:** Brown (3 1/2" model)
Black (4" and 5" models)
- ✓ **Tread Hardness:** 75 (± 5) Shore D Scale
- ✓ **Temperature Range:**
(Continuous) -20° F to + 475° F
(Intermittent) -20° F to + 575° F

Triton Wheels

Capacity up to 1,500 lbs. each



Wheel Diameter (Inches)	Tread Width (Inches)	Bearing	Capacity (Pounds)	Wheel Model Number	Bearing Bore (Inches)	Bore Less Bearing (Inches)	Hub Length (Inches)
6	2	SEALED ROLLER	1,500	6-535T RB	1/2	1-3/16	2-3/8
6	2	LESS ROLLER	1,500	6-535T	LESS BEARING	1-3/16	2-3/8

FEATURES

- ✓ Higher load capacities than Phenolic wheels
- ✓ Enhanced polypropylene material has non-absorbent characteristics which enable longer life cycle
- ✓ Manufactured with non-hazardous substances
- ✓ Quieter than Phenolic wheels
- ✓ Resists damage from hard impacts and shocks
- ✓ Competitively priced!

Magnum™ Wheels

Capacity up to 1,200 lbs. each



Orange 73D (±5) Durometer

Wheel Dia. (Inches)	Tread Width (Inches)	Bearing	Capacity (Pounds)	Model Number	Bearing Bore (Inches)	Hub Length (Inches)	Approx. Weight (Pounds)
4	2	Prec. Ball	900	UAP.04/20.1/2 73D	1/2	2-7/16	1-1/4
6	2	Prec. Ball	1,000	UAP.06/20.1/2 73D	1/2	2-7/16	3
8	2	Prec. Ball	1,200	UAP.08/20.1/2 73D	1/2	2-7/16	5-1/4

Grey 60D (±5) Durometer

Wheel Dia. (Inches)	Tread Width (Inches)	Bearing	Capacity (Pounds)	Model Number	Bearing Bore (Inches)	Hub Length (Inches)	Approx. Weight (Pounds)
4	2	Prec. Ball	800	UAP.04/20.1/2 60D	1/2	2-7/16	1-1/4
6	2	Prec. Ball	1,000	UAP.06/20.1/2 60D	1/2	2-7/16	3
8	2	Prec. Ball	1,000	UAP.08/20.1/2 60D	1/2	2-7/16	5-1/4

FEATURES

Jarvis Caster's new Magnum polyurethane wheels are designed to meet today's most stringent ergonomic needs. These premium polyurethane wheels are standard with crowned treads, sealed precision ball bearings and top hat reducing bushings for optimum rollability. Magnum wheels will perform well in both manual and power-towed material handling applications. They are available in five different tread durometers (hardness) and color coded for easy identification.

The polyurethane treads are both mechanically and chemically bonded to die-cast aluminum wheel centers (chemically for 4" diameter models). This dual bonding process prevents tread separation, which is the most common reason for polyurethane tread failure. Jarvis Caster's Magnum polyurethane wheels will provide longer life, higher capacity, superior rollability and are more energy efficient than conventional rubber-tired wheels.

Magnum Polyurethane Wheels Feature:

- Superior rollability
- Excellent floor protection
- Resistance to most chemicals and oils
- Non-marking
- Temperature range: -40° to +180°F
- Color coded hardness system



Blue 95A (±5) Durometer

Wheel Dia. (Inches)	Tread Width (Inches)	Bearing	Capacity (Pounds)	Model Number	Bearing Bore (Inches)	Hub Length (Inches)	Approx. Weight (Pounds)
4	2	Prec. Ball	700	UAP.04/20.1/2 95A	1/2	2-7/16	1-1/4
6	2	Prec. Ball	750	UAP.06/20.1/2 95A	1/2	2-7/16	3
8	2	Prec. Ball	900	UAP.08/20.1/2 95A	1/2	2-7/16	5-1/4



Red 80A (±5) Durometer

Wheel Dia. (Inches)	Tread Width (Inches)	Bearing	Capacity (Pounds)	Model Number	Bearing Bore (Inches)	Hub Length (Inches)	Approx. Weight (Pounds)
4	2	Prec. Ball	500	UAP.04/20.1/2 80A	1/2	2-7/16	1-1/4
6	2	Prec. Ball	500	UAP.06/20.1/2 80A	1/2	2-7/16	3
8	2	Prec. Ball	800	UAP.08/20.1/2 80A	1/2	2-7/16	5-1/4



Black 70A (±5) Durometer

Wheel Dia. (Inches)	Tread Width (Inches)	Bearing	Capacity (Pounds)	Model Number	Bearing Bore (Inches)	Hub Length (Inches)	Approx. Weight (Pounds)
4	2	Prec. Ball	400	UAP.04/20.1/2 70A	1/2	2-7/16	1-1/4
6	2	Prec. Ball	410	UAP.06/20.1/2 70A	1/2	2-7/16	3
8	2	Prec. Ball	500	UAP.08/20.1/2 70A	1/2	2-7/16	5-1/4



PolyLoc™ / Blue Polyurethane Wheels

Capacity up to 1,000 lbs. each



6-220P
(shown in photo)

FEATURES

Attractive blue polyurethane is mechanically locked to grey polyolefin wheel core for lasting performance in demanding applications. The tread will not separate or de-bond under extreme water or liquid conditions, and it offers excellent abrasion resistance. Sealed roller bearings are designed to keep water and contaminants out and lubrication in for long service life.

- ✓ **Standard Color / Finish:** Dark blue tread on light grey wheel core
- ✓ **Tread Hardness:** 95 (± 5) Shore A Scale
- ✓ **Temperature Range:** -30° F to + 180° F

Wheel Diameter (Inches)	Tread Width (Inches)	Bearing	Capacity (Pounds)	Model Number	Bearing Bore (Inches)	Hub Length (Inches)	Approximate Weight (Pounds)
4	2	Roller	600	4-220P	3/4	2-3/8	1
5	1 1/2	Roller	500	5-215P	3/4	2	1-1/4
	2	Roller	750	5-220P	3/4	2-3/8	1-1/2
		Delrin	750	5-320P	3/4	2-3/8	1-1/2
6	1 1/2	Roller	600	6-215P	3/4	2	1-3/4
	2	Roller	900	6-220P	3/4	2-3/8	2-3/4
		Delrin	900	6-320P	3/4	2-3/8	2-3/4
8	1 1/2	Roller	800	8-215P	3/4	2	2-1/4
	2	Roller	1,000	8-220P	3/4	2-3/8	2-3/4
		Delrin	1,000	8-320P	3/4	2-3/8	2-3/4

PolyLoc™ / Grey Polyurethane Wheels

Capacity up to 1,000 lbs. each



6-220G
(shown in photo)

FEATURES

Designed for a variety of institutional and industrial uses, this PolyLoc wheel features a grey polyurethane tread mechanically locked to a polyolefin wheel core. The thick, heavy duty wheel hub makes this model ideal for applications where shock and heavy loading are factors.

- ✓ **Standard Color / Finish:** Dark grey tread on light grey wheel core
- ✓ **Tread Hardness:** 95 (± 5) Shore A Scale
- ✓ **Temperature Range:** -30° F to + 180° F

Wheel Diameter (Inches)	Tread Width (Inches)	Bearing	Capacity (Pounds)	Model Number	Bearing Bore (Inches)	Hub Length (Inches)	Approximate Weight (Pounds)
4	2	Roller	600	4-220G	3/4	2-3/8	1-1/4
		Delrin	600	4-320G	3/4	2-3/8	1-1/4
5	1 1/2	Roller	500	5-215G	3/4	2	1-1/4
		Delrin	500	5-315G	3/4	2	1-1/4
	2	Roller	700	5-220G	3/4	2-3/8	1-1/2
		Delrin	700	5-320G	3/4	2-3/8	1-1/2
6	1 1/2	Roller	600	6-215G	3/4	2	1-3/4
		Delrin	600	6-315G	3/4	2	1-3/4
	2	Roller	800	6-220G	3/4	2-3/8	1-3/4
		Delrin	800	6-320G	3/4	2-3/8	1-3/4
8	1 1/2	Roller	800	8-215G	3/4	2	2-1/4
		Ball	800	8-215BG	3/4	2-1/4	2-1/4
		Delrin	800	8-315G	3/4	2	2-1/4
	2	Roller	1,000	8-220G	3/4	2-3/8	2-3/4
		Delrin	1,000	8-320G	3/4	2-3/8	2-3/4

Moldon Polyurethane Aluminum Core Wheels

Capacity up to 1,200 lbs. each



6-720
(shown in photo)

FEATURES

Moldon Polyurethane wheels feature a blue polyurethane tread permanently vulcanized to a die-cast aluminum wheel core. Polyurethane typically outlasts rubber treads five-to-one while resisting most oils, acids and other chemicals.

Their aluminum wheel core allows for a light weight wheel without loss of load capacity. They provide maximum floor protection while under heavy loads and will not take a compression set (flat spot) when left standing for long periods of time.

Wheel Diameter (Inches)	Tread Width (Inches)	Bearing	Capacity (Pounds)	Model Number	Bearing Bore (Inches)	Bore Less Bearing (Inches)	Hub Length (Inches)	Approximate Weight (Pounds)
4	1 1/2	BALL	425	4-715B	1/2, 5/8, 3/4	1-3/8	1-3/4	1-1/2
	2	ROLLER	600	4-720	3/4	1-3/16	2-3/8	2-3/8
5	1 1/2	BALL	600	5-715B	1/2, 5/8, 3/4	1-3/8	1-3/4	1-3/4
		ROLLER	600	5-715	5/8	1-3/16	1-5/8	1-3/4
	2	ROLLER	900	5-720	3/4	1-3/16	2-3/8	2-3/8
		BALL	900	5-720B	1/2, 5/8, 3/4	1-3/8	2-3/16	2-3/8
6	1 1/2	BALL	800	6-715B	1/2, 5/8, 3/4	1-3/8	1-3/4	2
		BALL	1,000	6-720B	1/2, 5/8, 3/4	1-3/8	2-1/4	2-5/8
	2	ROLLER	1,000	6-720	3/4	1-3/16	2-3/8	2-5/8
		DELTRIN	1,000	6-721	3/4	1-3/16	2-3/8	2-5/8
8	1 5/8	BALL	900	8-715B	1/2, 5/8, 3/4	1-3/8	2-1/4	3
		BALL	1,200	8-720B	1/2, 5/8, 3/4	1-3/8	2-1/4	4-1/4
	2	ROLLER	1,200	8-720	3/4	1-3/16	2-5/8	4-1/4
		DELTRIN	1,200	8-721	3/4	1-3/16	2-5/8	4-1/4

- ✓ **Standard Color / Finish:** Blue tread on die-cast aluminum wheel core
- ✓ **Tread Hardness:** 55 (± 5) Shore D Scale
- ✓ **Temperature Range:** -40° F to + 160° F

Moldon Polyurethane Cast Iron Core Wheels

Capacity up to 1,500 lbs. each



6-720CI
(shown in photo)

FEATURES

Moldon polyurethane tread wheels offer the high load capacity of steel wheels combined with added floor protection and shock absorbing capability. These wheels are designed for heavy duty service under punishing shock load and side thrust applications.

Like rubber tread wheels, they protect floors and are quiet in operation. They provide maximum floor protection while under

heavy loads and will not take a compression set (flat spot) when left standing for long periods of time. Special bore and keyway sizes are available. Please consult factory.

- ✓ **Standard Color / Finish:** Blue polyurethane on silver wheel core
- ✓ **Tread Hardness:** 55 (± 5) Shore D Scale
- ✓ **Temperature Range:** -30° F to + 180° F

Wheel Diameter (Inches)	Tread Width (Inches)	Bearing	Capacity (Pounds)	Model Number	Bearing Bore (Inches)	Bore Less Bearing (Inches)	Hub Length (Inches)	Approximate Weight (Pounds)
4	2	ROLLER	700	4-720CI	3/4	1-3/16	2-3/8	4-1/2
5	2	ROLLER	1,050	5-720CI	3/4	1-3/16	2-3/8	5
6	2	ROLLER	1,200	6-720CI	3/4	1-3/16	2-3/8	5-3/4
8	2	ROLLER	1,500	8-720CI	3/4	1-3/16	2-3/8	8-1/2

Solid Elastomer Wheels

Capacity up to 1,250 lbs. each



6-760
(shown in photo)

FEATURES

Solid Elastomer wheels are the best choice for moving heavy loads with ease. They are the ergonomic solution to many heavy duty applications and outperform any conventional caster wheel on the market.

Solid Elastomer wheels are recommended for tow-line applications and are popular in automotive environments. They also offer a superior resistance to chipping, flat spotting, cracking and most chemicals, acids and water.

- ✓ **Standard Color / Finish:** Grey
- ✓ **Tread Hardness:** 80 (± 5) Shore D Scale
- ✓ **Temperature Range:** -40° F to + 230°

Wheel Diameter (Inches)	Tread Width (Inches)	Bearing	Capacity (Pounds)	Model Number	Bearing Bore (Inches)	Hub Length (Inches)	Approximate Weight (Pounds)
3	1 3/8	Precision Ball	300	3-750	1/2	1-9/16	1/2
		Precision Ball	300	3-755	3/8	1-9/16	1/2
4	1 3/8	Precision Ball	500	4-755	3/8	1-9/16	3/4
		Delrin Roller	1,250	4-761	3/4	2-3/8	1-1/2
	2	Delrin Roller	1,250	4-760	3/4	2-3/8	1-1/2
		Precision Ball	1,250	4-770	1/2	2-7/16	1-1/2
5	1 3/8	Flanged Ball	700	5-750	1/2	1-9/16	1
		Precision Ball	700	5-755	3/8	1-9/16	1
	2	Delrin Roller	1,250	5-761	3/4	2-3/8	2
		Delrin Roller	1,250	5-760	3/4	2-3/8	2
		Precision Ball	1,250	5-770	1/2	2-7/16	2
			1,250	5-770	1/2	2-7/16	2
6	2	Delrin Roller	1,250	6-761	3/4	2-3/8	2-1/4
		Delrin Roller	1,250	6-760	3/4	2-3/8	2-1/4
		Precision Ball	1,250	6-770	1/2	2-7/16	2-1/4
8	2	Delrin Roller	1,250	8-761	3/4	2-3/8	3-1/2
		Delrin Roller	1,250	8-760	3/4	2-3/8	3-1/2
		Precision Ball	1,250	8-770	1/2	2-7/16	3-1/2

Phenolic Wheels

Capacity up to 1,400 lbs. each



6-222
(shown in photo)

FEATURES

Phenolic wheels are an industry-standard performer with proven service over many decades. These economical wheels are well suited to a wide variety of industrial and commercial uses. Phenolic wheels are constructed of compression molded phenolic resin filled with macerated canvas.

They are a hard tread wheel with high load capacity and are resistant to most oils and other chemicals. Phenolic wheels roll easier and more quietly than steel or cast iron, providing greater floor protection.

Wheel Diameter (Inches)	Tread Width (Inches)	Bearing	Capacity (Pounds)	Model Number	Bearing Bore (Inches)	Bore Less Bearing (Inches)	Hub Length (Inches)	Approximate Weight (Pounds)
3	1 1/2	PLAIN ROLLER	600	3-121	1/2	1/2	1-5/8	1/2
	1 13/16	ROLLER	600	3-221	3/4	1-3/16	1-5/8	1/2
		ROLLER	700	3-222	9/16	1-1/8	1-15/16	3/4
3 1/4	2	ROLLER	700	3-1/4-222	3/4	1-3/16	2-3/8	1-1/4
4	1 1/2	PLAIN ROLLER	600	4-121	1/2	1/2	1-5/8	1
	2	ROLLER	600	4-221	3/4	1-3/16	1-5/8	1
		PLAIN ROLLER	800	4-122	3/4	3/4	2-3/16	1-1/2
5	1 1/2	PLAIN ROLLER	600	5-121	1/2	1/2	1-5/8	1-1/2
	2	ROLLER	600	5-221	3/4	1-3/16	1-5/8	1-1/2
		PLAIN ROLLER	1,000	5-122	3/4	3/4	2-3/16	1-3/4
6	1 1/2	PLAIN ROLLER	800	6-121	1/2	1/2	1-5/8	1-1/2
	2	ROLLER	800	6-221	3/4	1-3/16	1-5/8	1-1/2
		PLAIN ROLLER	1,200	6-122	3/4	3/4	2-3/16	2-1/2
8	2	PLAIN ROLLER	1,400	8-122	3/4	3/4	2-3/16	4
		ROLLER	1,400	8-222	3/4	1-3/16	2-3/8	4

- ✓ **Standard Color / Finish:** black
- ✓ **Tread Hardness:** 90 (± 5) Shore D Scale
Rockwell 102E
- ✓ **Temperature Range:** -45° F to + 250° F

Hi-Temp Phenolic

Capacity up to 1,400 lbs. each



8-222HT
(shown in photo)

FEATURES

With a maximum operating temperature range of +525° F (intermittent service), these durable wheels are designed to perform in conditions that will destroy ordinary caster wheels. Their high load capacity enables them to move heavy loads under extreme heat conditions. All Jarvis high-temp Phenolic wheels are equipped with stainless steel roller bearings with stainless steel raceways for maximum service life and rolling ease.

Wheel Diameter (Inches)	Tread Width (Inches)	Bearing	Capacity (Pounds)	Model Number	Bearing Bore (Inches)	Bore Less Bearing (Inches)	Hub Length (Inches)	Approximate Weight (Pounds)
4	1 1/2	PLAIN	600	4-121HT	1/2	-	1-5/8	1/2
	2	STAINLESS STEEL ROLLER	800	4-222HT	3/4	1-3/16	2-3/8	2
5	1 1/2	PLAIN	600	5-121HT	1/2	-	1-5/8	1/2
	2	STAINLESS STEEL ROLLER	1,000	5-222HT	3/4	1-3/16	2-3/8	2-1/2
6	2	STAINLESS STEEL ROLLER	1,200	6-222HT	3/4	1-3/16	2-3/8	3
8	2	STAINLESS STEEL ROLLER	1,400	8-222HT	3/4	1-3/16	2-3/8	3-1/2

- ✓ **Standard Color / Finish:** brown
- ✓ **Tread Hardness:** 90 (± 5) Shore D Scale
Rockwell 102E
- ✓ **Temperature Range:**
-45° F to + 475° F (Continuous operation)
-45° F to + 525° F (Intermittent service)
Consult factory.